



Our Lady of the Sacred Heart Children's Treasure Hunt



Our Lady of the Sacred Heart
Catholic Parish, Herne Bay

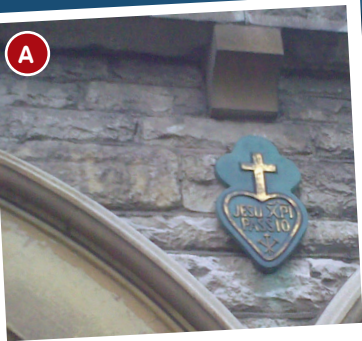


Inside our parish church

Serving the Catholic and wider community of Herne Bay
Part of the Archdiocese of Southwark
Served by the Passionist Order



A



The logo of the Passionists. There is more than one!



B



A light to show when the confessional is free.



C



A man carrying a box of tools. He'll be near Jesus!



D



An acorn, try looking in Mary's side chapel.



E



St Paul of the Cross is often shown holding the rule of the Order he founded.



F



A lamp to show that Jesus is present in the church.





G

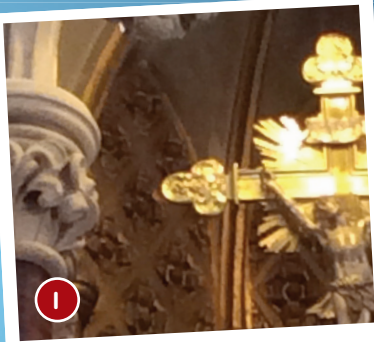
This bell is rung to signal the start of Mass.



H



What is the name of the saint holding these flowers?



I

Jesus rose from the dead three days after dying on the Cross. Find this Cross.



J

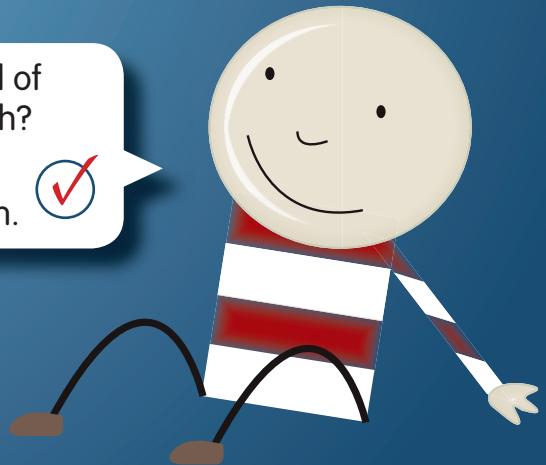


Have a look outside for this plaque, can you also see Mary, Our Mother?



Can you help me find all of these items in our church?

Put a tick in the circles when you've found them.



K

Where might you see this cross? Hint: try the room at the back of the church.



L

There are twelve of these, each with a candleholder underneath.



M

A purple stole, used by the priest in the sacrament of reconciliation



N

The most important place in the church. Sanctus means 'holy'.



A The Passionist sign above the main door. Others are in the Reconciliation Room, on the stained glass and on the altar. B The old confessional near the front right of the church is not often used today, most people go to the Reconciliation Room at the back of the church. C These tools, found on the fifth station of the Cross, might be the ones used to nail Jesus to the Cross. D There are a lot of pretty stone carvings in this church, like this one in the Marian chapel. Look out too for the carvings of the Lamb of God, the Annunciation, the Nativity, Jesus in Gethsemane and others in the two side chapels. E The book being held by St Paul of the Cross is the Rule of the Passionist Order (the text is in Latin). The Passionists look offer our parish. The second, main statue is St Gabriel and other saints can be found on the stained glass behind the altar. F One of two lamps lit to show that the Blessed Sacrament, Jesus in the form of bread, is in the Tabernacle (N). G This bell, located on the left hand side of the sanctuary, near the door to the sacristy, is rung at the start of Mass. H The two statues (back left of church) are St Therèse of Lisieux (holding roses) and St Anthony of Padua, patron of the poor. I There are a few crucifixes in the church, a rather graphic one in the Reconciliation Room, and this, above the tabernacle. J Outside, opposite the front door, is our shrine to the Blessed Virgin Mary. This sign on the altar says 'Hail, Mary' in Latin. K This is the top of the baptismal font in the Reconciliation Room. Baptisms are now celebrated at the front of the church using a portable font. The stoup, the place where holy water is kept near the door, reminds us of our baptism. L This is one of the crosses found above a candle, which was lit when the church was blessed by the bishop. M The colours of the material covering the Tabernacle changes according to the time in the church's year. The stole used in the Sacrament of Reconciliation is always purple. N The Tabernacle was the holy tent of the Israelites where God lived. In our church Jesus, in the form of the Blessed Sacrament, is kept here. During Mass, Jesus is present in the Eucharist, in the Word, in the person of the priest and in the people.